

ISSUE 6  
2024

# Play structure users **SAFETY HANDBOOK**



# PRODUCT SAFETY STATEMENT

All outdorable® play equipment and attachments are manufactured and tested to comply with the current EN, AS and NZ safety standards as stated below

**Test EN 71 - EN 1176:2017 - AS4685:2021 and NZS5828:2015**

## **Supervised Early Childhood Services' (SECS)**

The safety standard outlines a classification named 'Supervised Early Childhood Services' (SECS). This classification allows the differentiation and specification of playground equipment specifically installed for supervised children under school age in an educational environment. The SECS classification allows the usage of moveable equipment – a range of purpose-made manufactured equipment that is not permanently fixed in place and can be adjusted and moved by educators on a regular basis to vary the play configuration.

Our Outdorable BeaverLodge wooden outdoor play equipment comes under this section as being totally flexible and moveable, a perfect play solution for Supervised Early Childhood Services.

Your responsibility as the purchaser:

**Children are to be supervised at all times while playing and exploring on and around our equipment. As these structures are totally flexible, it is the supervisor's responsibility to ensure that the equipment is set up in a safe and functional configuration. Common sense is the key factor.**

**All Outdorable outdoor play equipment that is over 600mm high or could be used or configured at the height of 600mm or greater is marked with our safety badge shown below.. Be sure you read and understand this PLAY STRUCTURE USERS SAFETY HANDBOOK before using the equipment. This can be downloaded from our website. Also available for download is the copy of the safety certification for your reference.**

Certified to EN1176:2017 / AS4685:2021 / NZS5828:2015

Play structures over 600mm high require soft fall playground certified soft fall surfacing at least 1500mm from the structure at any given point.

D.O.M \_\_\_\_\_

OUTDORABLE® New Zealand [outdorable.com](http://outdorable.com)



## OUTDORABLE PLAY STRUCTURES USER SAFETY HANDBOOK

*Thank you for joining the outdorable family, your play space is now open for little explorers !*

All Outdorable play structures are designed by expert design engineers in compliance with strict certification standards. We ensure that all care is taken that all equipment is manufactured in full compliance and accordance to current safety standards for use in ‘Supervised Early Childhood Facilities’

To get the most out of your play equipment, we recommend you take the time to read this safety manual to become familiar with the use of this equipment.

**It is important that the following guidelines and safety requirements are adhered to.**

### **A1 – Supervision.**

Supervision is required always whilst children use the play equipment. Supervisors must check the equipment is placed on an even and level surface and is safe before each use. Early Childhood Facilities that use movable playground equipment shall ensure that any such use is under constant supervision and that movable equipment is secured when not in use.



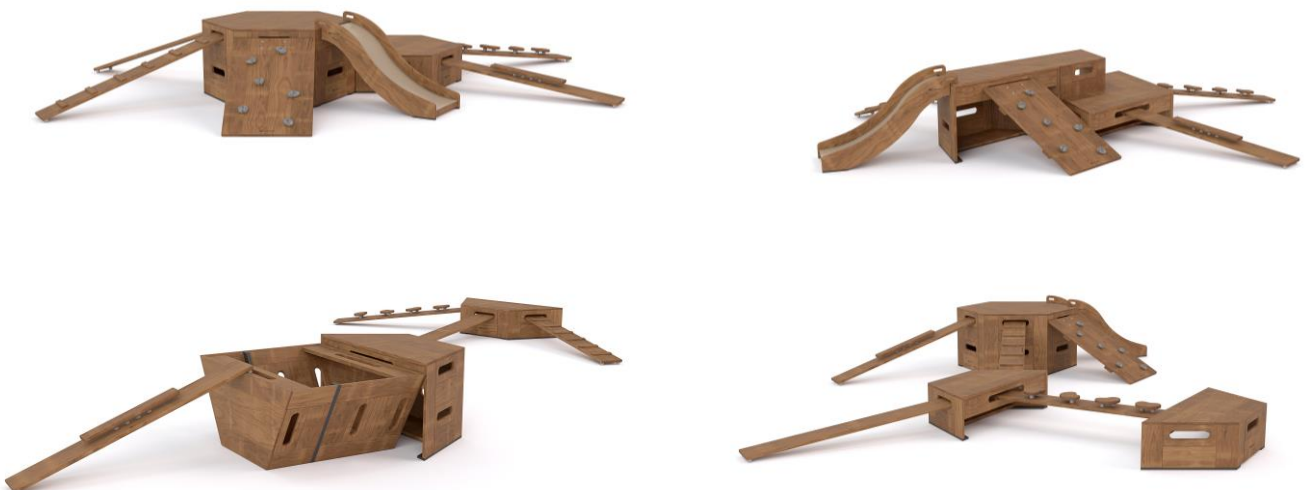
Movable equipment offers variety, challenge, changeability, and versatility of play opportunities. Your moveable equipment area should be designed to accommodate a range of equipment that children can use to create climbing challenges, obstacle courses, and constructions to enhance their socio-dramatic play. It needs to be able to meet the needs of all children attending the centre.

Our equipment is modular and can be configured in multiple different ways to create engaging and challenging play adventures for the children. It is important to observe some basic rules and common sense to ensure compliance and safe play. Below are some examples of different configurations you can create with some of our most popular packages.

**Baby Package (0-2 Years) – basic configuration examples**



**Toddler Package (2-3 Years) - basic configuration examples**



## Pre-School Package (3-5 Years) - basic configuration examples

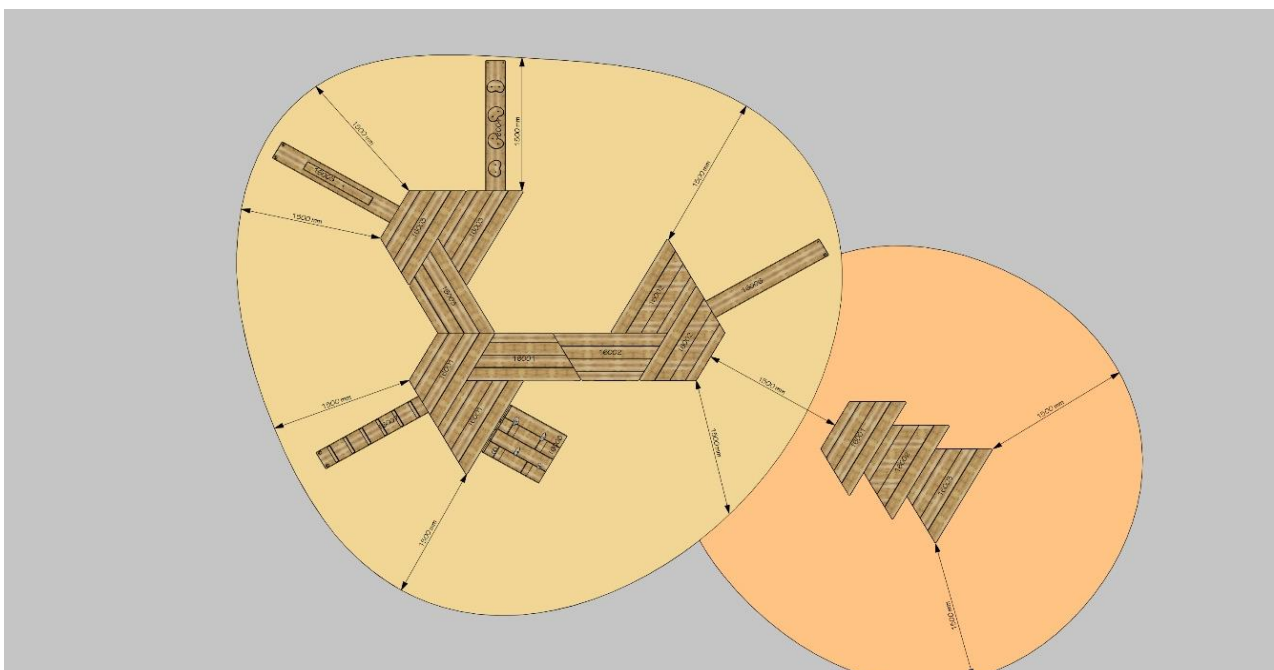


### A2 - Safety Surfacing / Soft fall.

Please ensure you have sufficient safety surfacing to accommodate various combinations of our play structures.

- A2.1** Safety regulations require a minimum of **1500mm** of safety surfacing which complies with current safety standards around any cluster of equipment above 600mm high at any given point.
- A2.2** This means that the 860mm BeaverLodge climbers as well as all attachments and challenge planks assembled to the structure above 600mm off the ground must be used on safety surfacing / soft fall that complies with current standards. NOTE: The 600 climber measures 585mmH so certified soft fall safety surfacing is not mandatory for this climber.

See below diagram showing fall zones and impact areas required.





Using one of the Outdoorable challenge planks, which measures 1500mm (59 inches) can be used to check the required soft falling space and impact area. There must be at least 1500mm between any other structure not 'linked' to the movable play configuration.

Any other configurations assembled at less than 600mm can be used safely on flat grass surfaces or similar.

**A2.3 BARK SURFACES** require extra care to ensure stability. Always ensure that the 860mm H climbers are joint to the monkey bars attachment and/ or the rock-climbing wall to give them stability. Nestle the climbers into the bark. If using 2 of the 860mmH climbers together, always use the Outdoorable Climber Connector available, which locks the climbers together in a hexagon as shown below.



**A2.4** Outdoorable play structures must be set up on flat stable surfaces. It is very important that all attachments are installed level and secure to the climbers.

**A2.5** Do not set up on sloping or rough surfaces as items may tip or move when in use. Slight gradients can be used if there is a level base created for each climber.

**A2.6** As you set up each configuration, pay attention to adjacent equipment and structures, with the view of potential trip, fall or entrapment hazards.

**A2.7 'Anti Topple' Prevention – 860mmH Climber:** There MUST be at least one attachment ie: climbing wall or monkey bars attached to the 860mm climber whenever you use the climber on its own in the upright position as an 'anti-topple' prevention. Alternatively, you can lay the climber down to create a boat or use the above locking device should you wish to lock 2 climbers together in a hexagon.

### A3 – Attachments.

Any attachments should be fitted securely to ensure they do not slip out of the slots provided in the climbers. Ensure the rubber stoppers on the planks are fully locked past the slot and the plank is tested for stability. The planks can also be used on the ground as balance beams and sensory equipment. Great for infants play areas.



**A3.1** We recommend that you do not allow more than 2 children to use planks at one time. Overloading the attachments can cause them to break.

**A3.2** The slide attachment can be simply placed into the upper slot on the climber as shown.

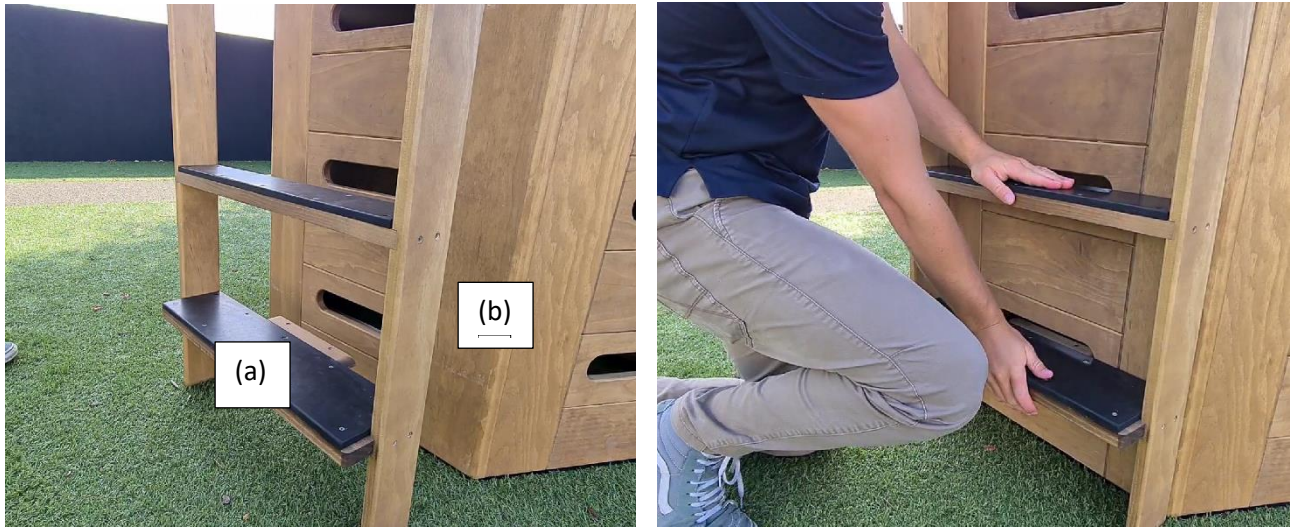


There is a locking device to ensure the slide is locked into place. Turn this lock once slide is in position.

### A3.3 - Overhead Branch Monkey Bars

The Overhead Branch climber **MUST** only to be used between two of climbers at **all times**. You can use either the 860mm or the 600mm climber. The overhead branch (monkey bars) are not designed to be used as a 'standalone' unit.

**A3.4** Always ensure the vertical support frames (a) are mounted securely to the climber (b) at both ends. Do not use this unit alone without being fitted to climbers at both ends. To lock the monkey bars into place, line up the connectors and ensure they are locked firmly into the slots by pressing down on the steps as shown below.



**A3.5** The Overhead Branch climber can be mounted to any of the 3 equal sides of the Trapezoidal climbers. Do not mount it on the long edge as it will only allow for one fixing point. (Shown below)





- A3.6** Do not allow children to climb on top of the Overhead Branch (2) as it is above the free fall height for soft fall play areas using movable play equipment.
- A3.7** Please ensure children are wearing suitable clothing with no drawstrings or hoodies to prevent strangulation.
- A3.8** Do not place any other climbing equipment beneath the Overhead Branch as it could hinder the free fall to the safety surfacing.
- A3.9** Always check the Overhead Branch climber before use to ensure it is safely fitted.
- A3.10** Only one child swinging at one time on the monkey bars.
- A3.11 - How to fit the Riverbank Climbing wall to the 600mm Climber**

As the rock climbing wall is best suited for the 860mm climber, it has the steel brackets set to fit this height climber snugly. To fit this rock climbing wall to the lower 600mm climber as used in the 2-3 years package, simply follow these steps.

**STEP 1:** Tilt the 600mm climber slightly backwards and insert the climbing wall brackets.



**STEP 2:** Slide the climber back to a level position and allow the steel climbing wall brackets to bend outwards.



## A4 – Maintenance and care

Outdorable play equipment is designed specifically for use outdoors in all environments. It is made from acetylated wood\* which is a non-toxic class 1 durable timber milled from controlled FSC sustainable forests. This eco-friendly wood turns a natural grey colour as it ages. If used around sandpits, the children become living sandpaper giving the top surfaces a sanding every day. Never mind though, as outdorable timber has your back and will last the daily hardships from our lively little people. We try to ensure that all planks are rounded smoothly, however over time they may wear on the edge if scraped along hard surfaces. There also may become splits or splinters from the timber edges. Please always check the planks and climbing equipment for splinters and deal with them by removing the item concerned from access to children, until repaired. If the chip / splinter is relatively small, peel off and loose splinters and sand the edges to make it smooth again.

### A4.1 – Slippery when wet

The tops of climbers can become slippery when wet. Dry off the equipment with a towel before allowing children to play on it. Check for leaf residue / surface mildew on the equipment, particularly if the equipment is left near or under trees, as this could make the surface slippery. Wipe clean before use.

Ensure supervisor checks equipment is safe to use at start of each play period especially after weather changes.

### Re-oiling your equipment.

If you wish to keep your equipment in the original look, please follow the below simple instructions on how to re-oil your play equipment. But remember, this is only for aesthetic reasons.

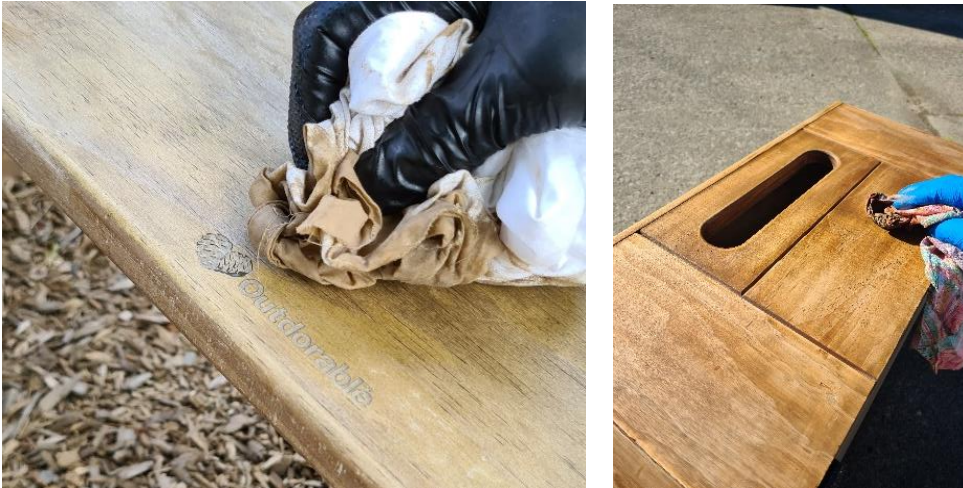
- 1) Scrub surface with soapy water to remove surface mould and dirt. For stubborn stains and surface mould discolorations, use pot scrub or light sandpaper (250+grit). Ensure surface is completely dry and free from dust before applying the oil.**



- 1) Wearing gloves, apply the oil liberally with a rag or large paintbrush. Rub excess off with a clean rag after 1-2 mins ensuring to wipe along the grain.**



- 2) Depending on the how warm the surface is, this may need 2 coats. Leave the equipment to dry for 24 hours between coats and before use. It is recommended not to apply oil in full heat of sunlight as oil may dry to quickly and become streaky.



All our products are made from Accoya timber which has been modified to resist moisture forming an effective barrier to insect attack and decay making it dimensionally stable and virtually rot proof.

The timber itself will grey out over time as it weathers in the outdoor environments, however will last for many years without rotting or breaking down, thanks to the accoya timber technology. See further details of our 'last for good guarantee' information online at [www.outdorable.com](http://www.outdorable.com)

Most importantly, have endless fun with your new outdorable equipment. You will find that the children will always be coming up with new ideas as their creativity is enhanced.



If you have any concerns regarding the safety of your product, you should remove the equipment from use and contact the Outdorable distributor in your region.


**CONSULTING COORDINATION  
SAFETY ENGINEERING**


 Sydney | Brisbane | Adelaide | Hobart | Melbourne  
 1300 959 732 P  
 +61 7 3870 5052 D  
 1800 959 732 F  
 contact@ccep.com.au E  
 www.ccep.com.au W

**AUSTRALIAN/NEW ZEALAND STANDARDS COMPLIANCE  
CERTIFICATE - PLAYGROUND EQUIPMENT - OUTDORABLE -  
RANGE**
**210208**

|                      |  |  |
|----------------------|--|--|
| <b>DISTRIBUTOR:</b>  | OUTDORABLE<br>9 GREENACRES ROAD NORTH,<br>REDWOOD VALLEY, 7081<br>NEW ZEALAND  |  |
| <b>MANUFACTURER:</b> | LEARNING SPACES GLOBAL LTD<br>9 GREENACRES ROAD NORTH,<br>REDWOOD VALLEY, 7081<br>NEW ZEALAND  |  |
| <b>EQUIPMENT:</b>    | 16001-A.PDF BEAVERLODGE CLIMBER<br>860<br>16002-A.PDF BEAVERLODGE CLIMBER<br>600<br>16003-A.PDF BEAVERLODGE CLIMBER<br>300<br>16004-A.PDF RIVER ROCKS PLANK<br>16005-A.PDF RIVER LOG PLANK<br>16006-A.PDF SMOOTH PLANK | 16007-A.PDF LADDER PLANK<br>16008-A.PDF CLIMBING WALL<br>160104-A.PDF DUAL MONKEY<br>BARS<br>ek83107CLT_Vers2-A.pdf - 16103 -<br>OUTDORABLE SLIDE - 600<br>ek83108CLT_Vers2-A.pdf -16103 -<br>OUTDORABLE SLIDE 860 |

We, Consulting Coordination Pty Ltd of u101/437 Bourke St, Surry Hills, 2010, NSW, Australia, hereby certify that we have assessed the above playground equipment modules as specified above for compliance with current Australian Standards. Based on our assessment, we are satisfied that the equipment specified above complies with the requirements of AS4685:2021, NZS5828:2015 and AS4685.0:2017 providing manufacture, assembly and installation is undertaken in accordance with AS4685:2021, NZS5828:2015 and inspection and maintenance in accordance with AS4685:2021, NZS5828:2015 and AS4685.0:2017 is undertaken by the facility owner.

This certificate is issued subject to the provision of structural assessment and footing details by a local structural RPEQ engineer.

Signature..........Friday, 23 April 2021  
 RICHARD ERWIN. BSc Eng (Civil) (Aust) MIEAust RPEQ CPEng


**CONSULTING COORDINATION  
 SAFETY ENGINEERING**

 Sydney | Brisbane | Adelaide | Hobart | Melbourne  
 1300 959 732 P  
 + 61 7 3870 5052 D  
 1800 959 732 F  
 contact@ccep.com.au E  
 www.ccep.com.au W

**EUROPEAN STANDARDS COMPLIANCE CERTIFICATE -  
 PLAYGROUND EQUIPMENT - OUTDORABLE - RANGE**
**210431**

**DISTRIBUTOR:** OUTDORABLE  
 9 GREENACRES ROAD NORTH,  
 REDWOOD VALLEY, 7081  
 NEW ZEALAND

**MANUFACTURER:** LEARNING SPACES GLOBAL LTD  
 9 GREENACRES ROAD NORTH,  
 REDWOOD VALLEY, 7081  
 NEW ZEALAND

|                   |  |  |
|-------------------|--|--|
| <b>EQUIPMENT:</b> | 16001-A.PDF BEAVERLODGE CLIMBER<br>860 | 16007-A.PDF LADDER PLANK<br>16008-A.PDF CLIMBING WALL      |
|                   | 16002-A.PDF BEAVERLODGE CLIMBER<br>600 | 160104-A.PDF DUAL MONKEY<br>BARS                           |
|                   | 16003-A.PDF BEAVERLODGE CLIMBER<br>300 | ek83107CLT_Vers2-A.pdf - 16103 -<br>OUTDORABLE SLIDE - 600 |
|                   | 16004-A.PDF RIVER ROCKS PLANK          | ek83108CLT_Vers2-A.pdf -16103 -<br>OUTDORABLE SLIDE 860    |
|                   | 16005-A.PDF RIVER LOG PLANK            |  |
|                   | 16006-A.PDF SMOOTH PLANK               |  |

We, Consulting Coordination Pty Ltd of u101/437 Bourke St, Surry Hills, 2010, NSW, Australia, hereby certify that we have assessed the above playground equipment modules as specified above for compliance with current European Standards. Based on our assessment, we are satisfied that the equipment specified above complies with the requirements of EN1176:2017 providing manufacture, assembly and installation is undertaken in accordance with EN1176:2017 and inspection and maintenance in accordance with EN1176:2017 is undertaken by the facility owner.

This certificate is issued subject to the provision of structural assessment and footing details by a local structural engineer.



Signature.....Thursday, 29 April 2021  
 RICHARD ERWIN. BSc Eng (Civil) (Aust) MIEAust RPEQ CPEng